

2007 Regional Public Conservation and Recreation Lands

Legend

Conservation and Recreation Lands

- Federal
- State or NYCDEP
- County
- Municipal
- Non-profit
- Private
- National Historic Landmarks

Trails

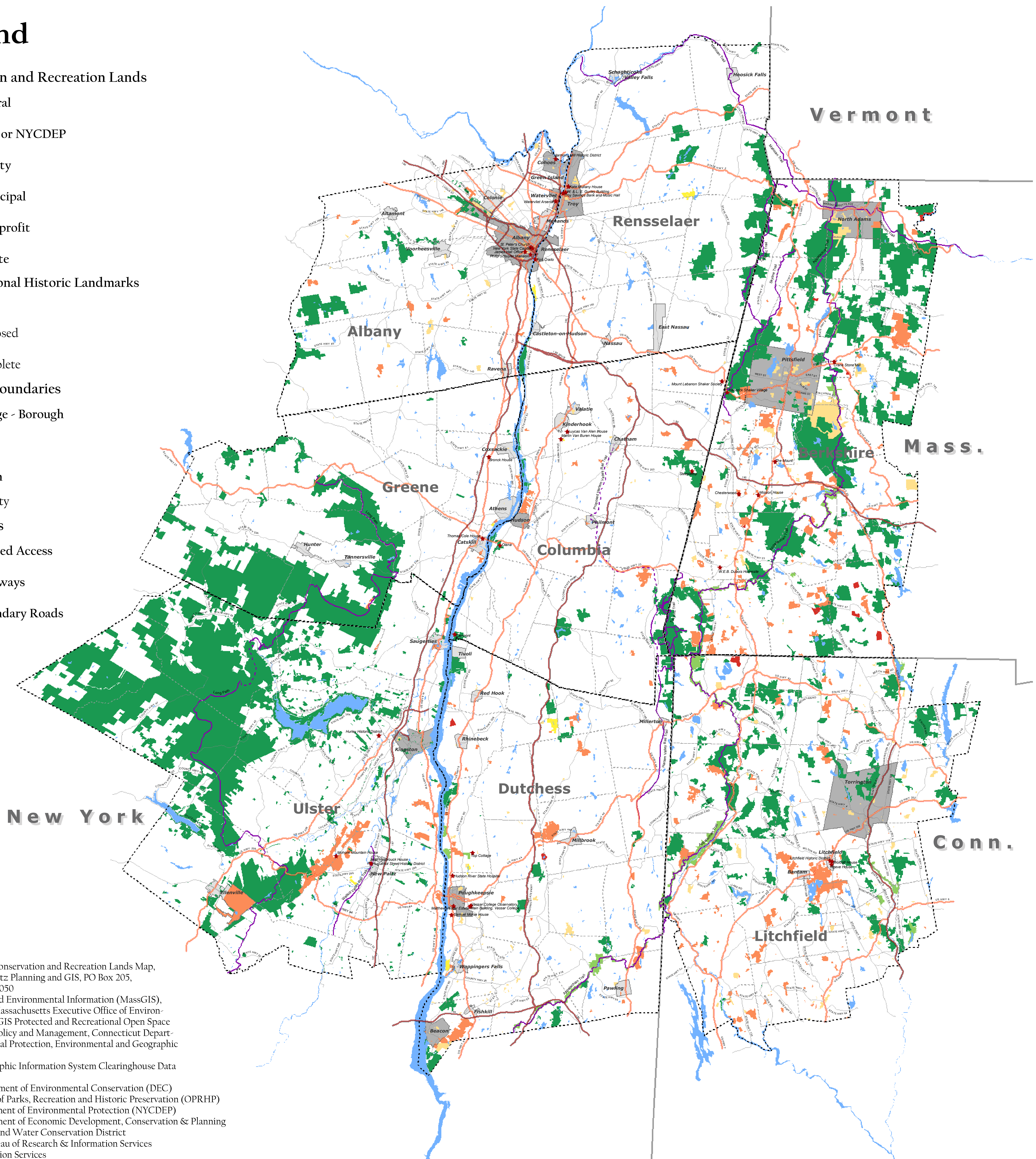
- Proposed
- Complete

Municipal Boundaries

- Village - Borough
- City
- Town
- County

Major Roads

- Limited Access
- Highways
- Secondary Roads



Data Sources:

2002 Regional Public Conservation and Recreation Lands Map, Prepared by Don Meltz Planning and GIS, PO Box 205, Columbiaville, NY 12050

Office of Geographic and Environmental Information (MassGIS), Commonwealth of Massachusetts Executive Office of Environmental Affairs, MassGIS Protected and Recreational Open Space

Connecticut Office of Policy and Management, Connecticut Department of Environmental Protection, Environment and Geographic Information Center

New York State Geographic Information System Clearinghouse Data Sharing Cooperative

New York State Department of Environmental Conservation (DEC)

New York State Office of Parks, Recreation and Historic Preservation (OPRHP)

New York City Department of Environmental Protection (NYCDEP)

Albany County Department of Economic Development, Conservation & Planning

Columbia County Soil and Water Conservation District

Rensselaer County Bureau of Research & Information Services

Ulster County Information Services

Catskill Center for Conservation and Development

Dutchess County Department of Planning and Development

Dutchess Land Conservancy

Open Space Institute

Scenic Hudson Land Trust

The Nature Conservancy

Housatonic Valley Association

Berkshire Natural Resources Council

Cities of Catskill, Cohoes, and Rensselaer

Towns of Ashland, Austerlitz, Beacon, Beekman, Bethlehem, Chatham, Clermont, Copake, Germantown, Greenport, Hurley, Hyde Park, Kinderhook, Livingston, Rhinebeck, Schodack, Stockport, and Taghkanic

Villages of Catskill, Kinderhook and Schaghticoke

This map was updated from the original 2002 map with data provided by the organizations and agencies listed above. The Columbia Land Conservancy, Inc. is not responsible for the accuracy of the data.



**COLUMBIA
LAND CONSERVANCY**
PO BOX 299 | 49 MAIN STREET
CHATHAM, NEW YORK 12037

Visit us at www.clctrust.org

